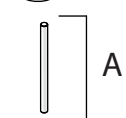
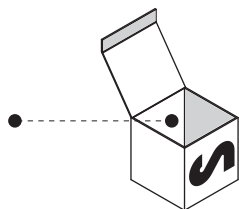


Not included / Non incluso / Non Inklus / Nie zawarty/ No incluido / Nao incluido

1



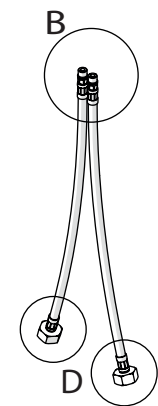
A



C1

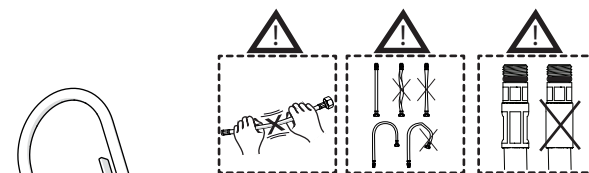


C

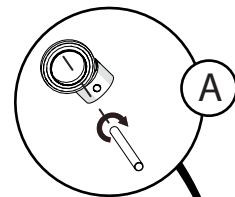
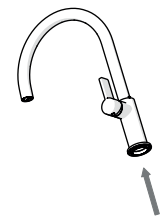


B

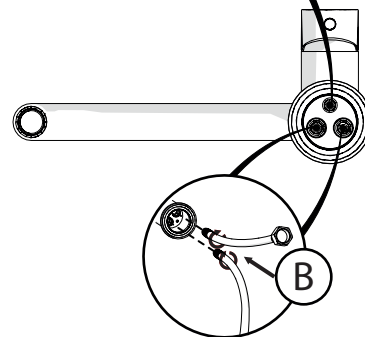
D



2



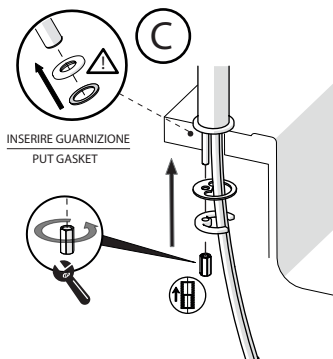
A



B

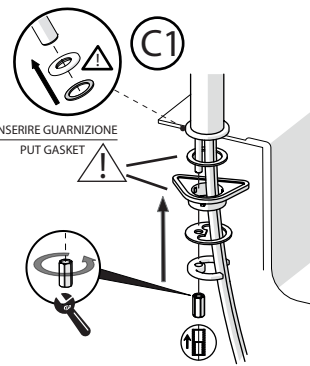


3



C

INSERIRE GUARNIZIONE  
PUT GASKET



C1

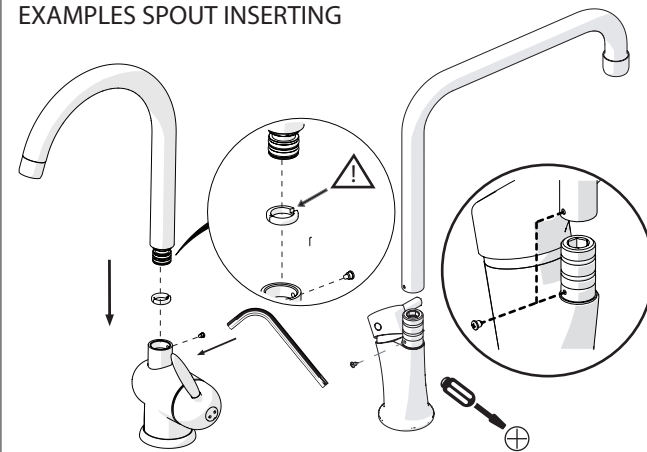
INSERIRE GUARNIZIONE  
PUT GASKET

opzionale per lavelli sottili  
optional for thin sinks

ESEMPI ATTACCO CANNA

4

EXAMPLES SPOUT INSERTING

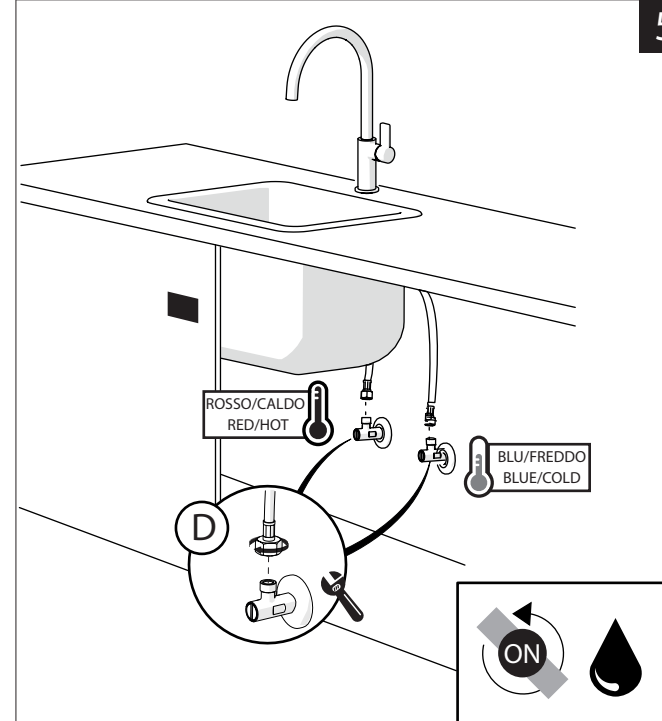


- Per ottenere il corretto montaggio della bocca di erogazione accertarsi che la vite di fissaggio venga introdotta in corrispondenza dell'apposita cava e non nell'incavo dell'anello.

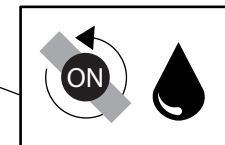
- In order to obtain the correct assembling of the spout make sure that the fixing screw has been inserted in the proper cavity and not in the cutting point of the ring.

- Per ottenere il corretto montaggio accertarsi che l'inserimento della bocca di erogazione avvenga facendo coincidere il foro presente sulla canna con quello dell'inserito in plastica già inserito sul nipler. Avvitare quindi la vite per il fissaggio.

- To obtain the correct assembling of the spout make sure that the introduction of the spout is done by aligning the hole on the spout with the one of the plastic insert already fitted on nipple. Screw then the fixing screw.

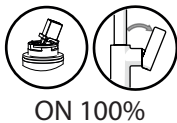
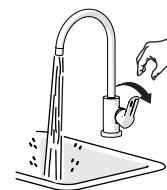


5

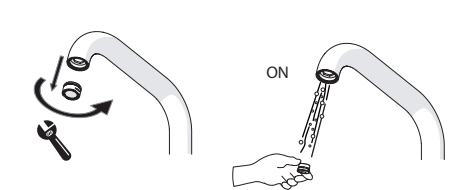
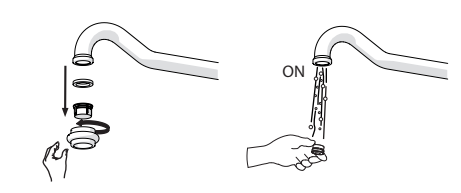
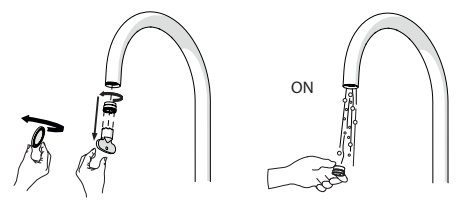




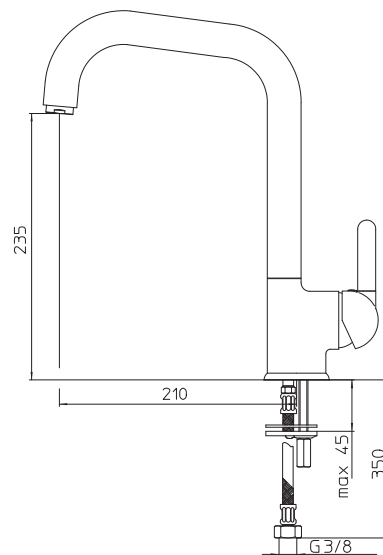
Dispositivo limitatore "dinamico"  
della portata d'acqua "50%"  
"Dinamic" flow rate restrictor "50%"



VARIE POSSIBILITÀ PER SMONTARE L'AERATORE  
SEVERAL OPTIONS FOR REMOVING AERATOR



ESEMPIO DISEGNO TECNICO NU12113/6  
EXAMPLE TECHNICAL DRAWING NU12113/6



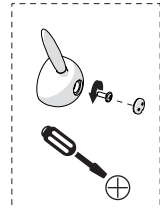
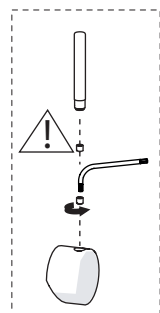
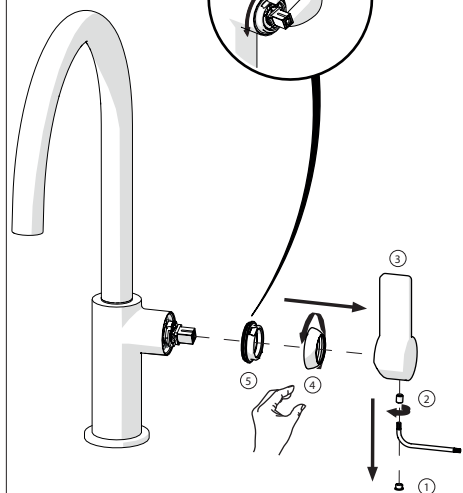
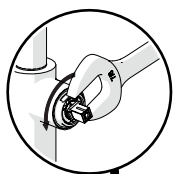
6

NOBILIS

113



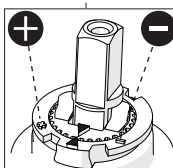
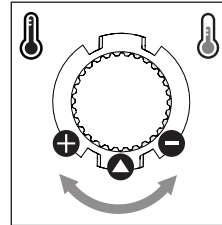
7



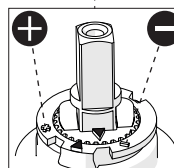
8

Per limitare la temperatura estrarre il limitatore  
e riposizionarlo nella posizione che si desidera

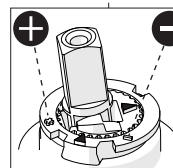
Extract the limiter and put it in correct  
position to limit temperature



Nessuna limitazione  
di temperatura  
No limitation  
of temperature



Limitazione parziale  
di temperatura  
Partial limitation  
of temperature

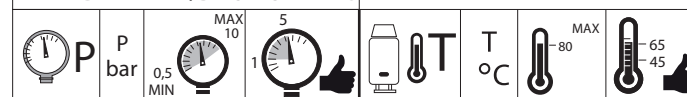


Massima limitazione  
Solo acqua fredda  
Maximum position  
Only cold water

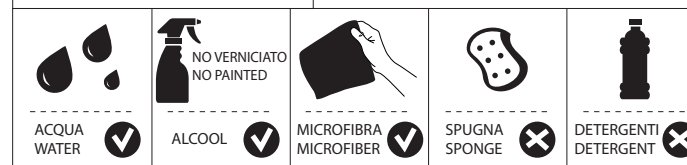


www.nobili.it

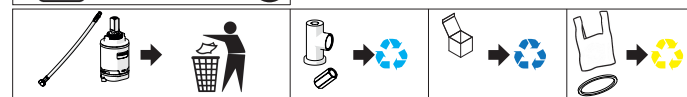
PRIMA DI INIZIARE / BEFORE STARTING



PULIZIA / CLEANING



PER VERNICIATO  
FOR PAINTED  
ACQUA E SAPONE  
WATER AND SOAP



IISTR00113#---STD



REV4.11/2019